

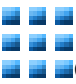


# **DG3000 / TD3000 series Data Generator user manual**



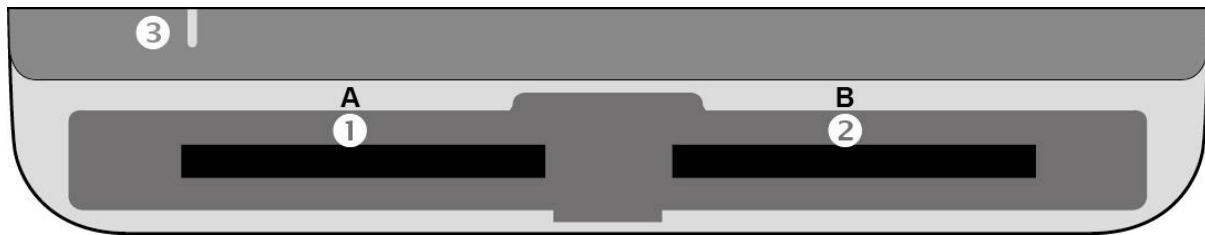
## Contents

<b>Chapter 1</b>	<b>Installation.....</b>	<b>3</b>
	Hardware Setup.....	3
	Equipment.....	3
	DG Probe .....	4
	Event Probe.....	5
	OE Probe.....	6
	18.5cm lead cable .....	7
	DG3000 series.....	9
	TD3000 series .....	11
<b>Chapter 2</b>	<b>Operation .....</b>	<b>13</b>
	 Utility.....	19
	 Protocol .....	20
	 General.....	21
<b>Chapter 3</b>	<b>Technical support .....</b>	<b>34</b>
<b>Appendix 1</b>	<b>Probe pin defined &amp; Dimension .....</b>	<b>36</b>
	DG Probe .....	36
	Event Probe.....	37
	OE Probe.....	38
	Tip Dimension.....	39
<b>Appendix 2</b>	<b>Use text editor tool to edit vector file .....</b>	<b>40</b>

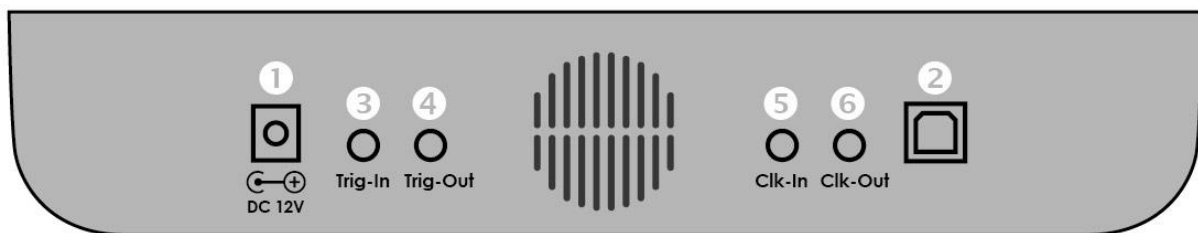
## Chapter 1 Installation

### Hardware Setup

#### Equipment



- ❶ Socket A
- ❷ Socket B
- ❸ Indicator LED
  - a. Green light : Show green light when powered and USB connected.
  - b. Red light : Show red light when the equipment is busy at transmission.



- ❶ DC 12V
- ❷ USB 3.0 Type B for computer
- ❸ Trigger In
- ❹ Trigger Out
- ❺ Reference Clock In
- ❻ Reference Clock Out

#### Probe Installations

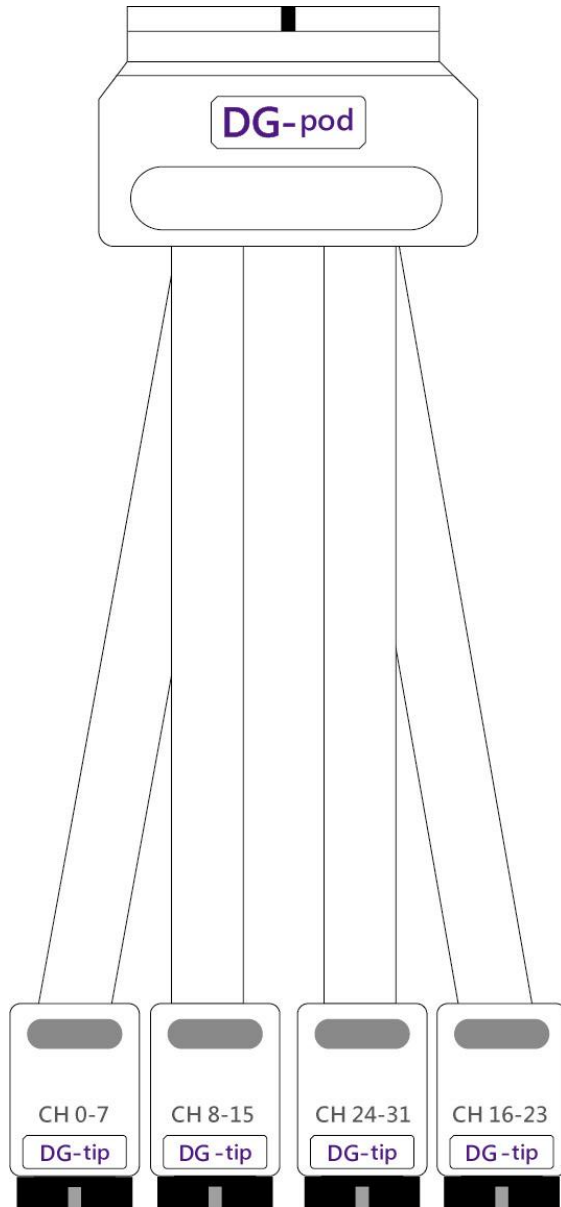
**Push in:** Hold the pod to face the slot of the master unit. Push the pod evenly into the slot until you hear the sound of click. Then, installation is completed.

**Pull out:** Use two fingers to simultaneously press the two connecting rods inside the slot, respectively, and the pod will pop out.

## DG Probe

※ Only provide by DG3000 series

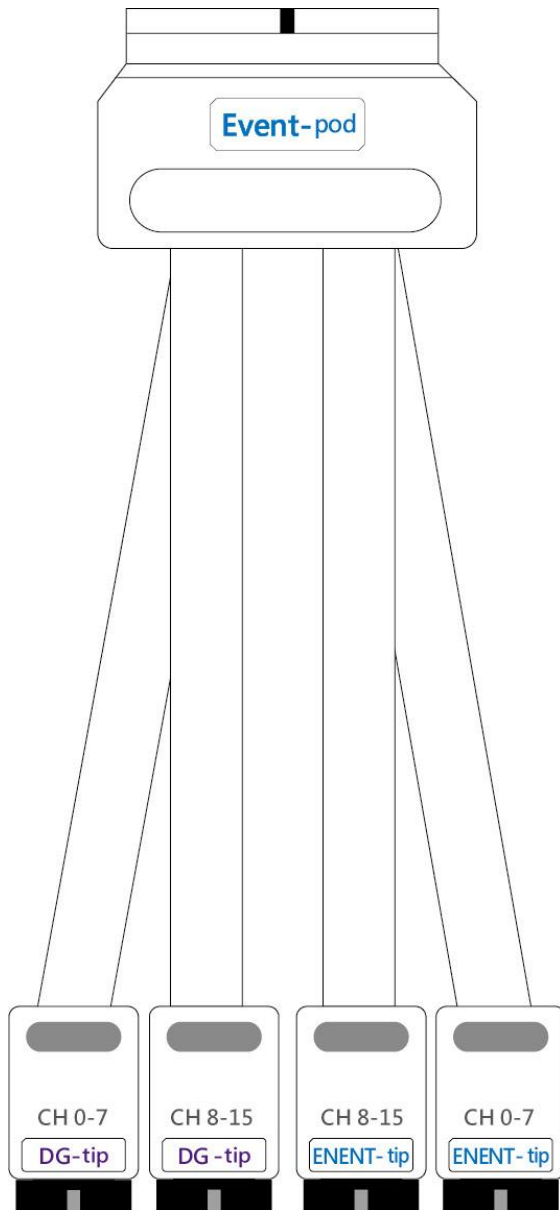
The DG-pod can be used in any slot. It has 4 DG tips, each of which has 8 signal output channels.



## Event Probe

※ Only provide by DG3000 series

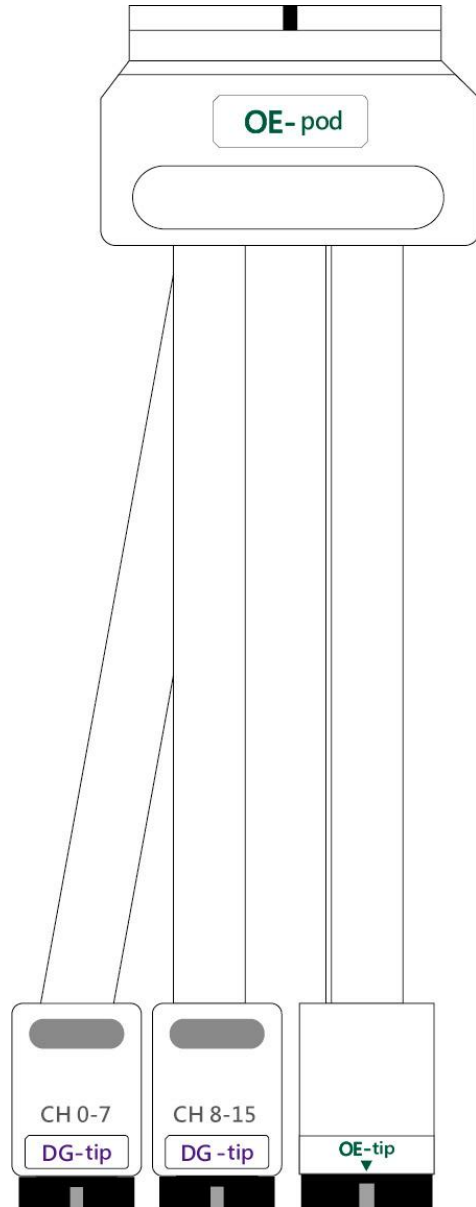
The Event-pod can be used in B/D slot. It has 4 tips, 2 tips are DG-tip; 2 tips are Event-tip.



## OE Probe

※ Only provide by DG3000 series

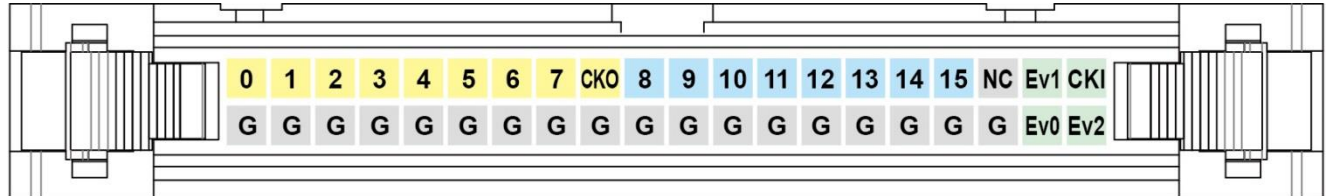
The OE-pod can be used in any slot. It has 3 DG tips, 2 tips are DG-tip; 1 tip is OE-tip that has 8 channels for Hi-Z output.




## 18.5cm lead cable

※ Only provide by TD3000 series

TD3000 has 16 channels for data output; 1 channel for clock out (CKO); 1 channel for clock in (CKI) and 3 channels for event input (Ev0~2).



## Software installation

Please visit the official website of Acute Technology Inc., go to the Download page, and then select and download the Data Generator. After completion of installation, the “start icon” of Data Generator will appear on the desktop and the program set. You can select either one to start TD3000/DG3000 (  ).

## DG3000 series

Model			DG3064B	DG3096B	DG3128B
Power	Power Source		12V Power adapter		
	Static Power Dissipation		9W	12W	18W
	Max. Power Dissipation		24W	30W	36W
Hardware Interface			USB 3.0		
Number of Output Channels			48	80	112
Memory	Total Memory Size		32Gb		
	Pattern Depth		256Mb/ch		
Data Rate			400Mbps (Max.)		
Operation Clock System	Internal	Range	1Hz ~ 400MHz		
		Resolution	6 digits		
	External	Clock Range	<200MHz		
		Input Channels	1 Channel (TTL3.3V)		
Data Flow Control			Loop, Jump, Hold, Wait for Event		
Period Jitter	Clock Channel		< 200ps		
	Data Channel		< 200ps		
Event	Internal		Hot Key		
	External	Channels	16		
		Mode	Logic AND / Logic OR		
		Threshold	-0.5V ~ 4.5V		
Phase Tuning Delayed	Channels		All		
	Time		> 300Mbps : No, < 300Mbps : 8 Phases from 0 to 1UI		
Temperature	Operating/Storage		5°C~45°C (41°F~113°F) / -10°C~65°C (14°F~149°F)		
Software Features	Languages		English / Traditional Chinese / Simplified Chinese		
	Save & Load Waveform		Yes		
	Regular Waveform Generator		Synchronous / Asynchronous Counter, I2C, MIPI I3C, MIPI RFFE, PMBus, SPI/SIPI, ...		
	Waveform Editing Interface		Waveform Drawing/Script File		
Device Dimension	L x W x H (mm <sup>3</sup> )		270 x 175 x 55		
Weight	Device / Accessories		800g / 1850g		
Probe	DG-pod / Event-pod / OE-pod		1 / 1 / 1	2 / 1 / 1	3 / 1 / 1
	Flying lead cable: DG (DG) /Event (DG, Event) /OE (DG, OE)		4 / 2, 2 / 2, 1	8 / 2, 2 / 2, 1	12 / 2, 2 / 2, 1

	Grippers		80	120	160
DG-Probe/ OE-Probe	Channels		32 for DG / 24 for OE		
	Data Rate		400Mbps (Max.)		
	VoL		0V		
	VoH min. for DG-Probe		0.8Vpp @ <= 50Mbps, 1.2Vpp @ <= 300Mbps, 1.5Vpp @ <= 400Mbps		
	VoH min. for OE-Probe		1.1Vpp @ <= 50Mbps, 1.3Vpp @ <= 300Mbps, 1.5Vpp @ <= 400Mbps		
	VoH max.		5.0V		
	Min. Pulse Width		2.5 ns		
	Impedance		CMOS with 20 Ohms		
	Fan Out		20mA/ch		
	Output Enable	DG-Probe	2 Group O.E. (16ch/O.E. * 2 = 32ch)		
		OE-Probe	1 Group O.E. + 8ch Independent O.E. (16ch+8ch=24ch)		
Event-Probe	Channels		16 (DG) + 16 (Event)		
	Frequency		200MHz (Max.)		
	Operation		-1V~8V @ 0.1V Resolution		
	Input Voltage (Non-destructive)		±15V DC+AC peak (Max.)		
	Minimum Pulse Width		2.5 ns		
	Sensitivity		~300mV		
	Impedance		1M    5p		

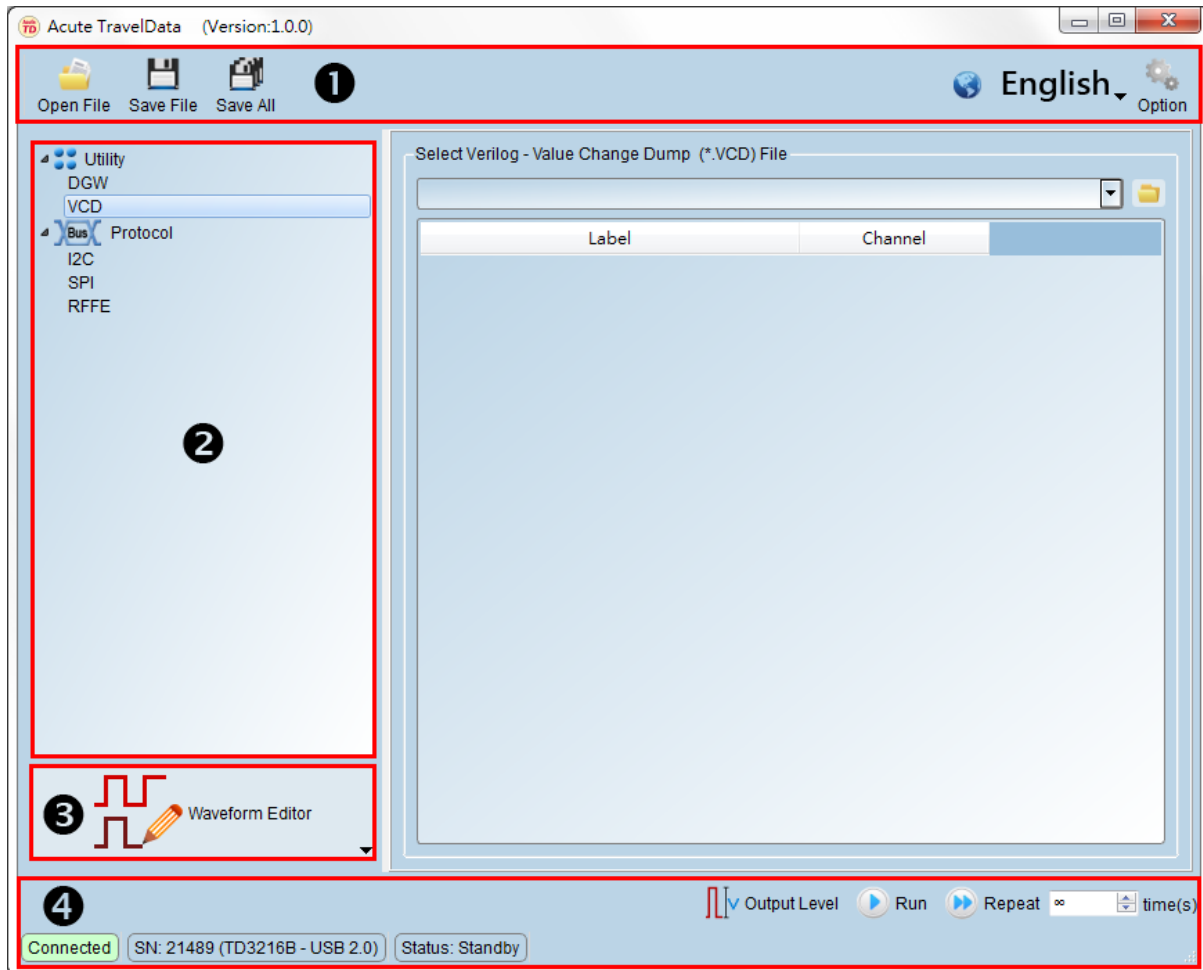
## TD3000 series

Model			TD3008E	TD3116B	TD3216B
Power	Power Source		USB 3.0		
	Static Power Dissipation		2.5W		
	Max. Power Dissipation		4.5W		
Hardware Interface			USB 3.0		
Number of Output Channels			8	16	
Memory	Total Memory Size		4Mb	16Mb	4Gb
	Pattern Depth		512Kb/ch	1Mb/ch	256Mb/ch
Data Rate			100Mbps (Max.)	200Mbps (Max.)	
Operation Clock System	Internal	Range	1Hz ~ 100MHz	1Hz ~ 200MHz	
		Resolution	6 digits		
	External	Clock Range	<100MHz	<200MHz	
		Input Channels	1 Channel (TTL3.3V)		
Data Flow Control			Loop, Jump, Hold, Wait for Event		
Period Jitter	Clock Channel		< 200ps		
	Data Channel		< 200ps		
Temperature	Operating/Storage		5℃~45℃ (41°F~113°F) / -10℃~65℃ (14°F~149°F)		
Software Features	Languages		English / Traditional Chinese / Simplified Chinese		
	Save & Load Waveform		Yes		
	Regular Waveform Generator		Synchronous / Asynchronous Counter, CAN, I²C, I²S, LIN, SPI, UART, ...		
	Waveform Editing Interface		Waveform Drawing/Script File		
Device Dimension	L x W x H (mm³)		123 x 76 x 21		
Weight			680g		
Lead Cable (Data / CLK-IN / CLK-OUT / Event / GND / N.C.)			A 40-pin lead cable (16 / 1 / 1 / 3 / 18 / 1)		
Grippers			20	40	
Data Output	Channels		8 with OE	16 with OE	
	Data Rate		100Mbps (Max.)	200Mbps (Max.)	
	Group		1 (ch0~7 & CKO)	2 (ch0~7 & CKO, ch8~15)	
	VoH min.		0.8Vpp @ ≤ 15Mbps 1Vpp @ ≤ 100Mbps	0.8Vpp @ ≤ 15Mbps, 1Vpp @ ≤ 100Mbps, 1.1Vpp @ ≤ 200Mbps	

	VoH max.		4.5V	
	VoL		0V	
	Min. Pulse Width		10 ns	5 ns
	Impedance		CMOS with 20 Ohms	
	Fan Out		20mA/ch @ 50 Mbps	
	Output Enable		All channels	
Event Input	Internal		Hot Key	
	External	Channels	3	
		Mode	Logic AND / Logic OR	
		Threshold	-4V ~ +6V	
		Frequency	200MHz (Max.)	
		Operation	-10V~10V	
		Non Destructive	±30V DC, 12Vpp AC (Non-destructive)	
		Min. Pulse Width	5 ns	
		Sensitivity	1.5V	
		Impedance	200KΩ    7pF	

## Chapter 2 Operation

It will show as the following after executing software.



### ① Tool Bar



Open File : Open \*.DGP file.



Save File : Save \*.DGP file (current protocol settings).



Save All : Save \*.DGP file (current all protocol settings).



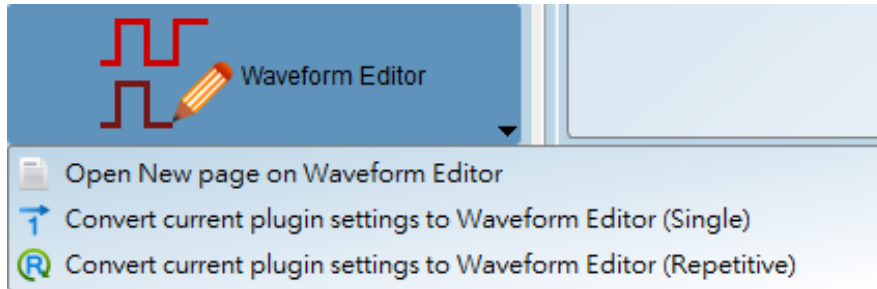
Languages: Display language. You can select English, Traditional Chinese, or Simplified Chinese




Option : System environment settings. Here you can set the working directory, the label height and hot key.

② Utility  / Protocol  /General 

### ③ Waveform Editor



 Open New page on Waveform Editor : Switch to the Waveform Editor, you can draw waveform by manual.



Convert current plugin settings (waveform) to Waveform Editor (Single).




Convert current plugin settings (waveform) to Waveform Editor (Repetitive).

### ④



Output Level : Adjust the output voltage.

DG3000 series : Set DG/EVENT/OE POD output/input voltage.


**H/W Configuration**
✕

**Operating Mode**

Timestamped format (96 Channels)

Working Frequency Multiple Factor: 1 x  
Available Channel Number: 96  
Command Availability: Every points  
Group controlled Output Enable: Supported

**Clock Mode**

Internal

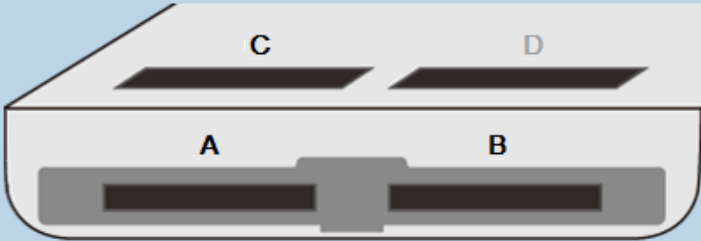
**Working Frequency** (1bps - 400Mbps, resolution: 6 digits)

1 x 200.000000 Mbps 5ns interval

**Device Memory**

10 M points (3.91%)

**Probe Configuration** (Maximum Available Channels: 128)



DG Tip with Group controlled Output Enable  
OE Tip with individual Output Enable  
Event Tip for input

Quick Setup

Slot A

**DG POD**  

DG 0 - 7 DG 8 - 15  
DG 16 - 23 DG 24 - 31

Output Level: 3.30 V  
Output Level: 3.30 V

Slot B

**EVENT POD**  

DG 0 - 7 DG 8 - 15  
EV 0 - 7 EV 8 - 15

Output Level: 3.30 V  
Threshold: 1.60 V

Slot C

**DG POD**  

DG 0 - 7 DG 8 - 15  
DG 16 - 23 DG 24 - 31

Output Level: 3.30 V  
Output Level: 3.30 V

Slot D

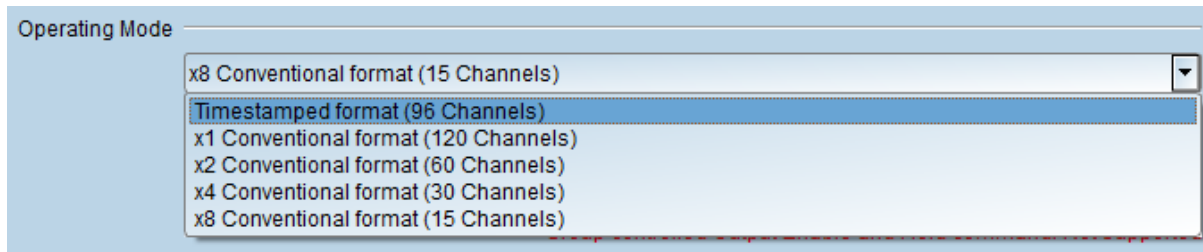
**Not Available**  

N/A N/A  
N/A N/A

Output Level: 3.30 V  
Threshold: 1.60 V

OK Cancel

## Operating Mode :



### Timestamped format (96 Channels):

Enable the repeat count function, the maximum output rate is 400 Mbps.

### x1 Conventional format (120 Channels):

Disable the repeat count function, the maximum output rate is 400 Mbps.

### x2 Conventional format (60 Channels):

Enable the x2 base frequency, the maximum output rate is 600 Mbps.

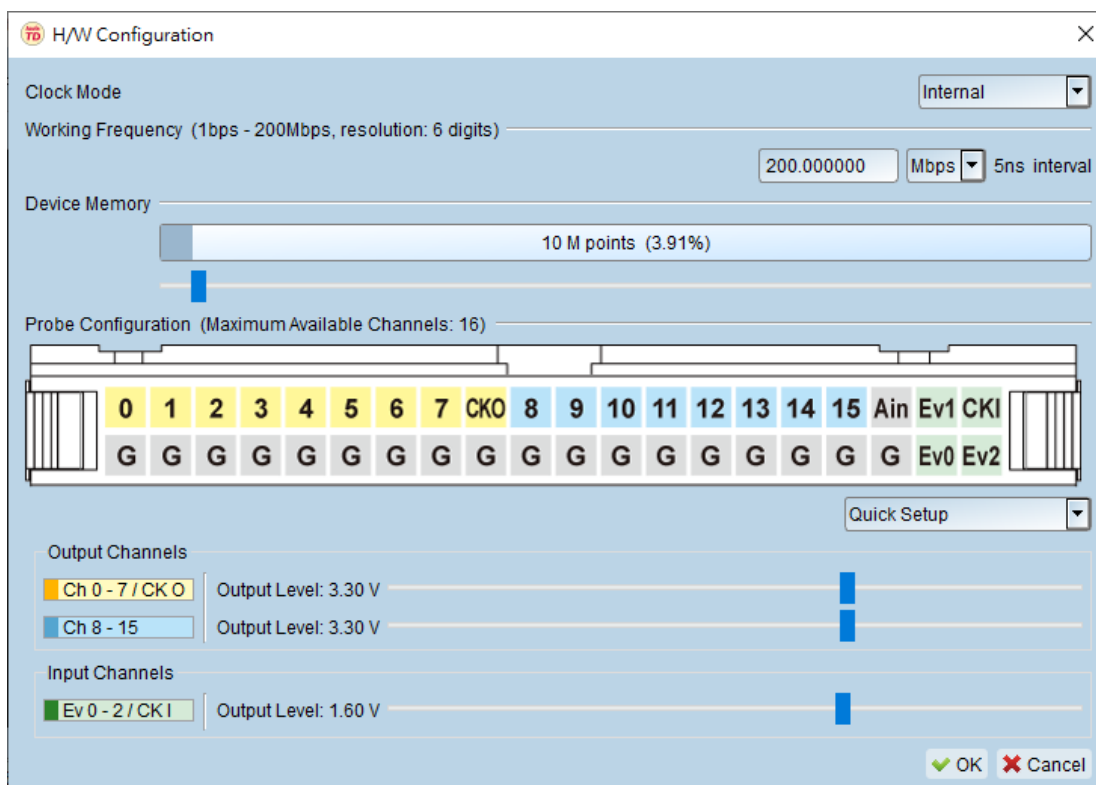
### x4 Conventional format (30 Channels):

Enable the x4 base frequency, the maximum output rate is 1.2 Gbps.

### x8 Conventional format (15 Channels):

Enable the x8 base frequency, the maximum output rate is 2.4 Gbps.

TD3000 series : Set CH0~CH15/Ev0-2/CKO/CKI output/input voltage.



**Clock Mode :** select Internal / Clk-In (MCX port) / CLK (I) or CKI.

**Internal:** select the internal clock.

**Clk-In (MCX port):** select the Clk-In of MCX port to input the external clock signal.

DG3K Clk-In (MCX port)



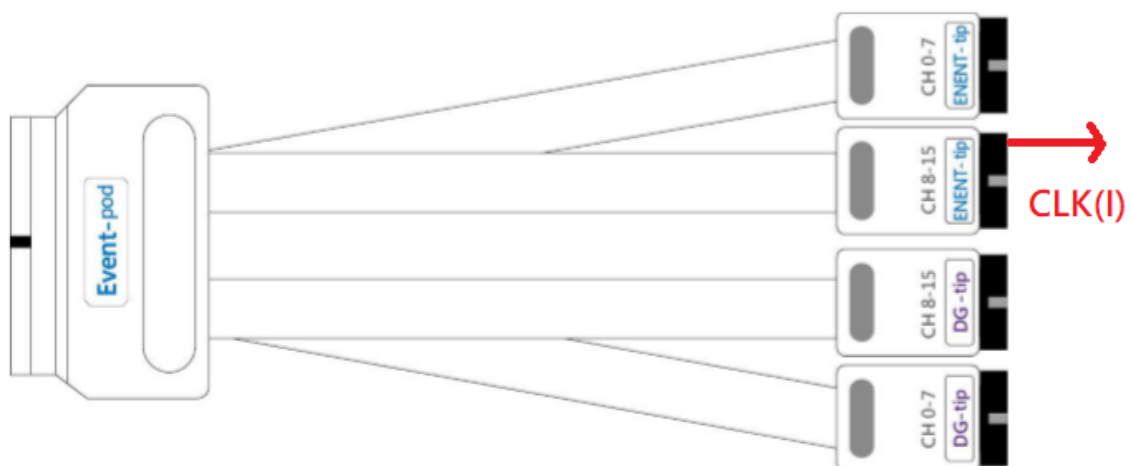
TD3K Clk-In (MCX port)



This specification is TTL3.3V, the input voltage must be higher than 2.4V (identified as 1), DG3K / TD3K can work normally in External Clock mode, and the maximum input frequency is 200 MHz.

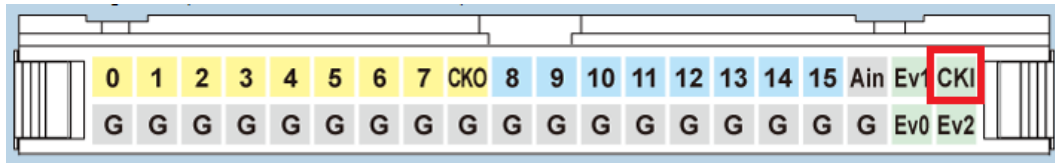
**CLK (I):**

DG3K CLK(I)



The input voltage is adjustable, and the input voltage range is -0.5V ~ 4.5V.

## TD3K CKI



The input voltage is adjustable, and the input voltage range is -5V ~ 5V.



Run : Output the waveform once.



Repeat: Output the waveform 1~ $\infty$  times..

## Utility

### **DGW/DGV**

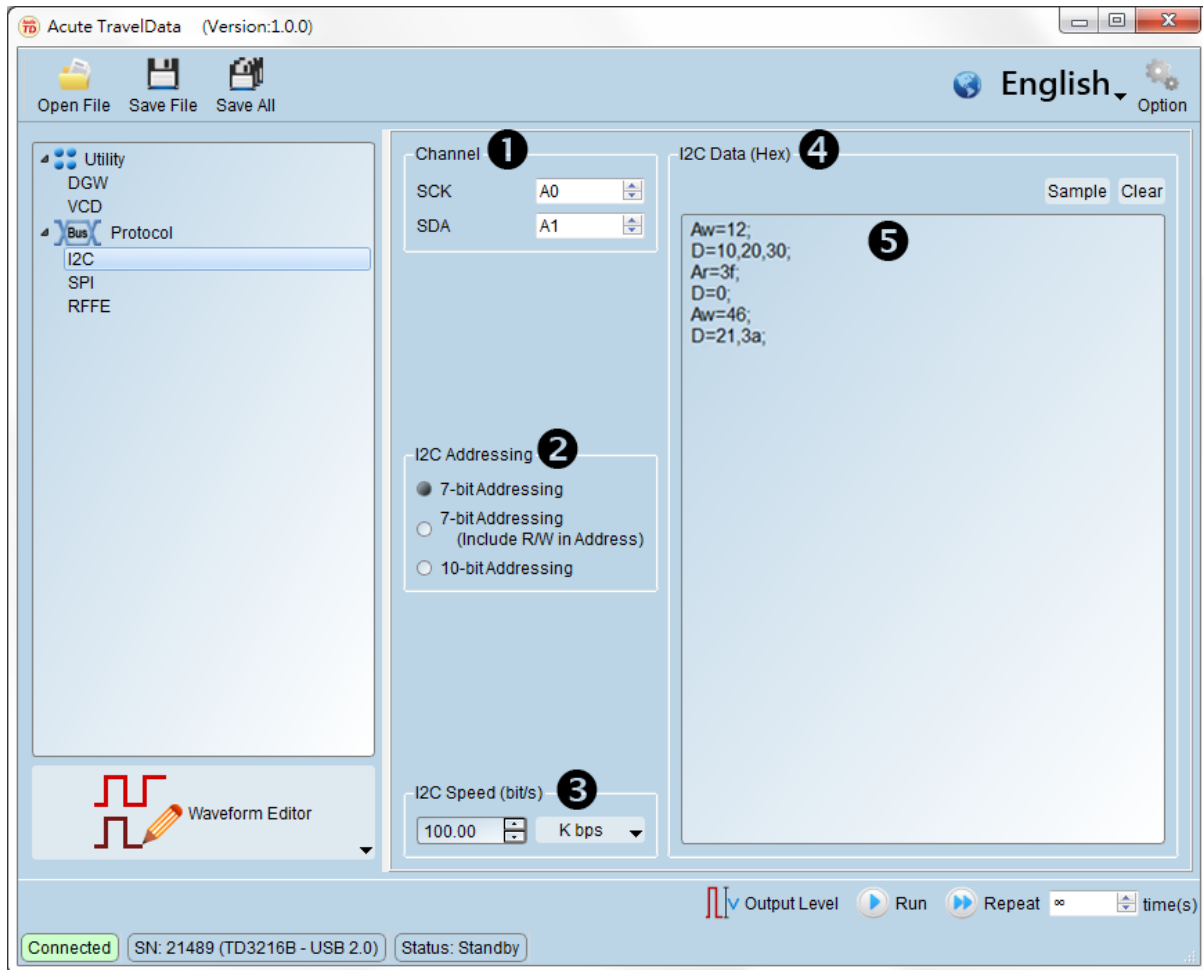
This function can output the waveform from the waveform file of DG3000/TD3000 series (\*.DGW/\*.TDW/\*.DGV).

### **VCD**

This function can output the waveform from Value Change Dump (\*.VCD).

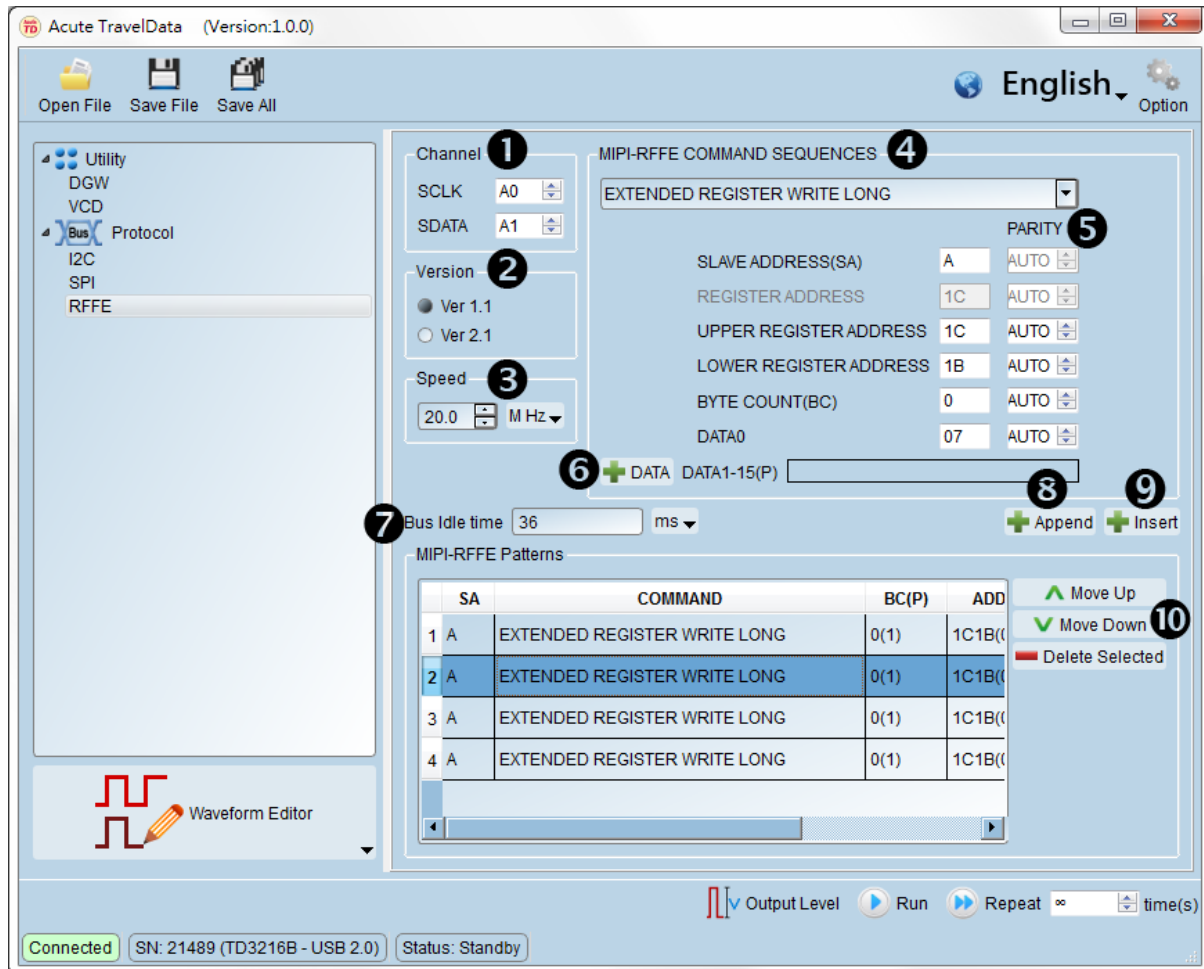
## Bus Protocol

### I2C



- ❶ Channel : Select SCK/SDA channel.
- ❷ I2C Addressing : Select 7-bit Addressing/7-bit Addressing (include R/W in Address)  
/10-bit Addressing.
- ❸ I2C Speed (bit/s) : Range: 10 bps ~ 50 Mbps.
- ❹ I2C Data(Hex) :  
Sample : Generate I2C data.  
Clear : Clear I2C data.
- ❺ I2C data format :  
Aw/Ar: I2C Address Write / Address Read.  
D : I2C data.  
Each I2C data is separated by a comma (,) and each row ends with a semicolon (;).

## MIPI RFFE



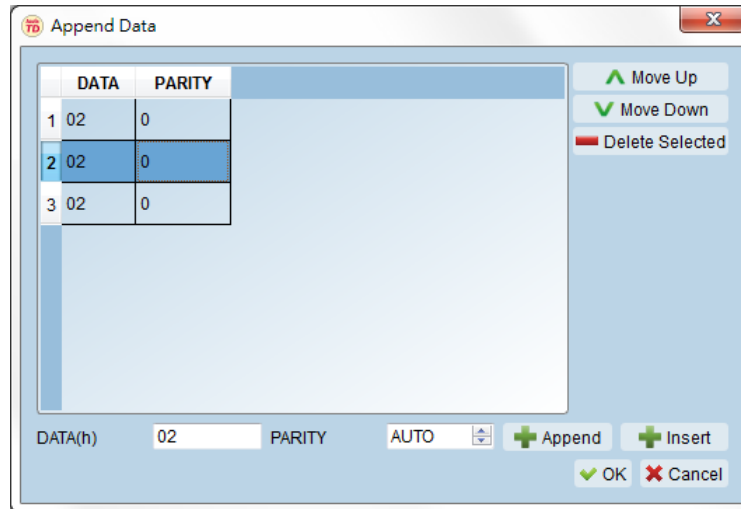
- ❶ Channel : Set SCLK/SDATA channel.
- ❷ Version : Select version 1.1 or 2.1.
- ❸ Speed : Support version 1.1, 20 MHz and version 2.1, 52 MHz. The maximum speed is 100 MHz.

### ❹ MIPI-RFFE COMMAND SEQUENCES

1. REGISTER 0 WRITE
2. REGISTER WRITE/READ
3. EXTENDED REGISTER WRITE/READ
4. EXTENDED REGISTER WRITE/READ LONG
5. INTERRUPT SUMMARY AND IDENTIFICATION
6. MASKED WRITE
7. MASTER OWNERSHIP
8. MASTER WRITE/READ
9. MASTER CONTEXT TRANSFER WRITE/READ

⑤ **PARITY** : It will generate the parity automatically when select AUTO and become red color when select invalid parity.

⑥ **DATA** : Append data when the quantity > 1 byte.



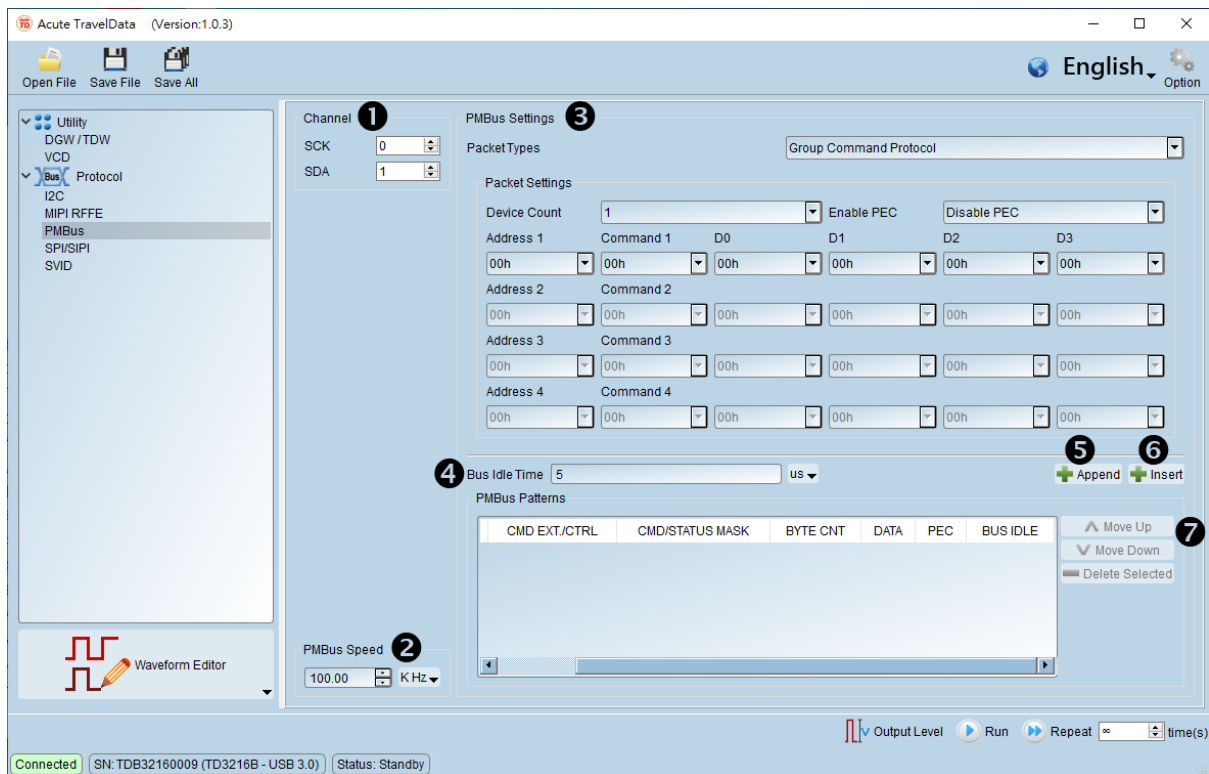
⑦ **Bus Idle Time** : Set the Idle time, the minimum idle time is 5 ns, 0 means no idle time.

⑧ **Append** : Append a new packet in the list.

⑨ **Insert** : Insert a new packet after the selection.

⑩ **Move up/ Move Down/ Delete Selected** : Move up/move down/delete the selection.

## PMBus



❶ Channel : Select SCK/SDA channel.

❷ PMBus Speed : Set PMBus protocol speed, its range is 1 KHz ~ 100 MHz.

❸ PMBus Settings :

Packet Types: Select PMBus packet, each packet has different frames, it will show these frames on the following section.

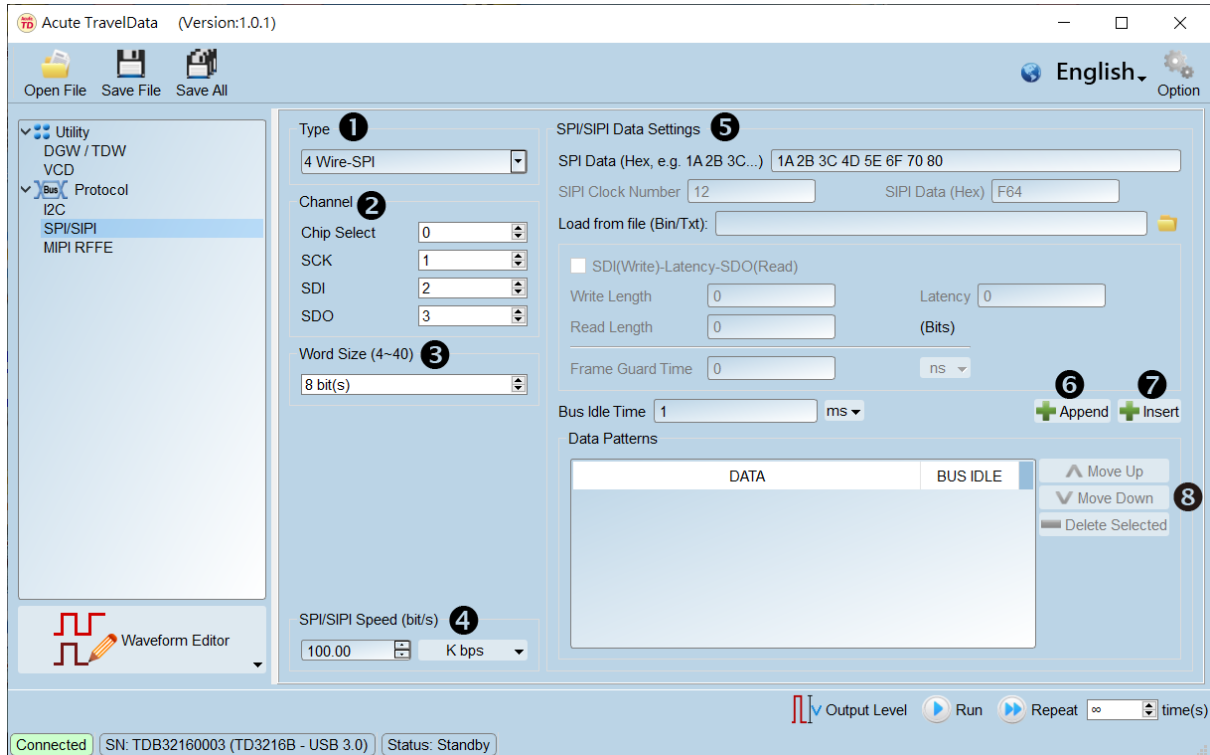
❹ Bus Idle Time : Set the Idle time, the minimum idle time is 5 ns, 0 means no idle time.

❺ Append : Append a new packet in the list.

❻ Insert : Insert a new packet after the selection.

❼ Move up/ Move Down/ Delete Selected : Move up/move down/delete the selection.

## SPI/SIPI



❶ Type : 4 Wire-SPI, 3 Wire-SPI, 3 Wire-SPI (Unused Chip

Slave), 2 Wire-SPI (Unused Chip Slave) and SIPI included.

❷ Channel : Select Chip Select/SCK/SDI/SDO channel.

❸ Word Size: Select the word size, its range is 4 ~ 40 bits.

❹ SPI/SIPI Speed : Set SPI/SIPI protocol speed, its range is 1Kbp ~ 100Mbps.

❺ SPI/SIPI Data Settings

SPI Data: Only hex format supported.

SIPI Clock/Data: SIPI clock number and SIPI data.

Load from file: The bin/txt file format supported, selecting the type before loading file.

SDI(Write)-Latency-SDO(Read): Set SDI-Latency-SDO mode, the parameters are as the following:

Write Length/Read Length/Latency/Frame Guard Time

Bus Idle Time : Set the Idle time, the minimum idle time is 5 ns, 0 means no idle time.

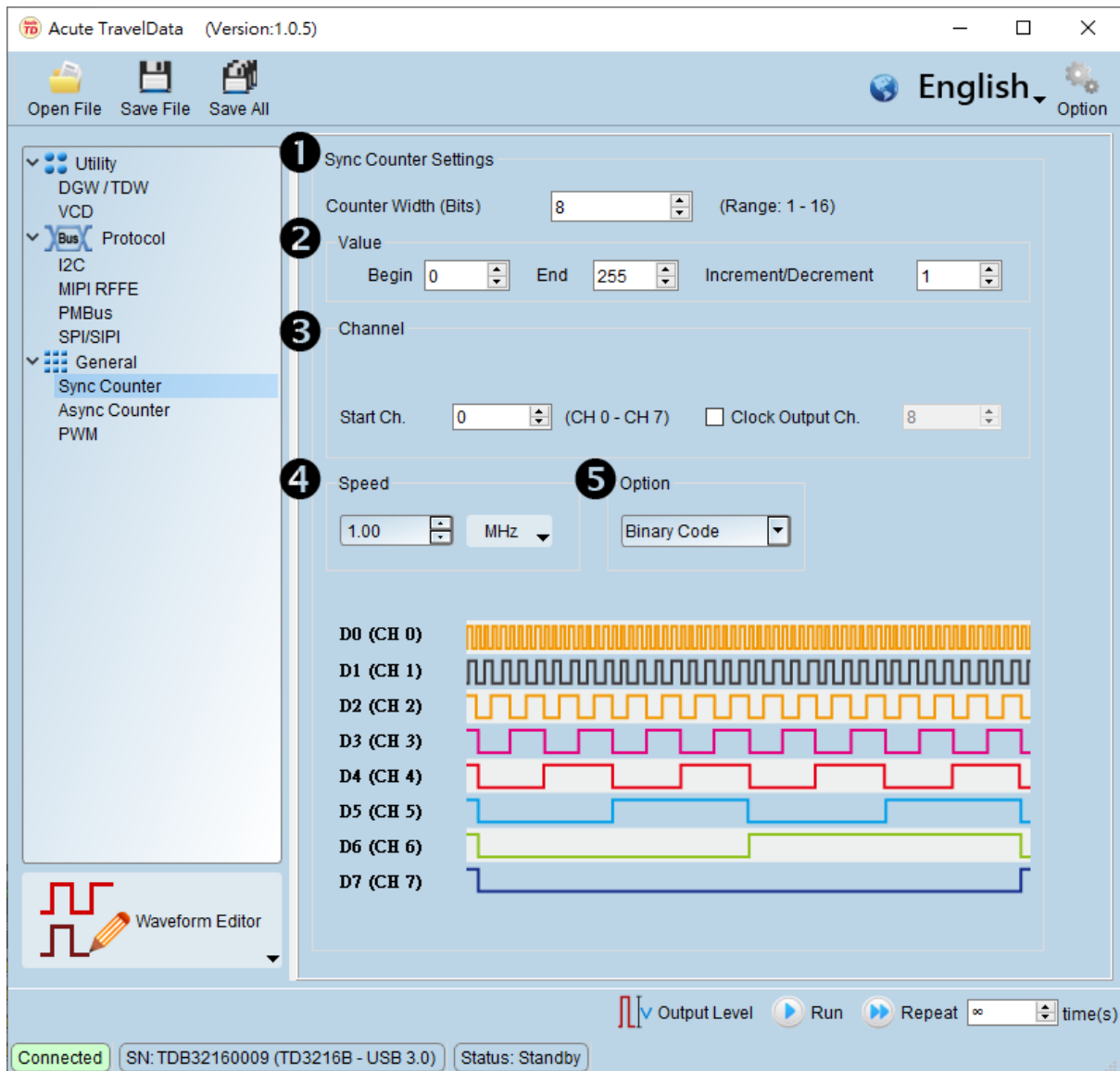
❻ Append : Append a new packet in the list.

❼ Insert : Insert a new packet after the selection.

❽ Move up/ Move Down/ Delete Selected : Move up/move down/delete the selection.

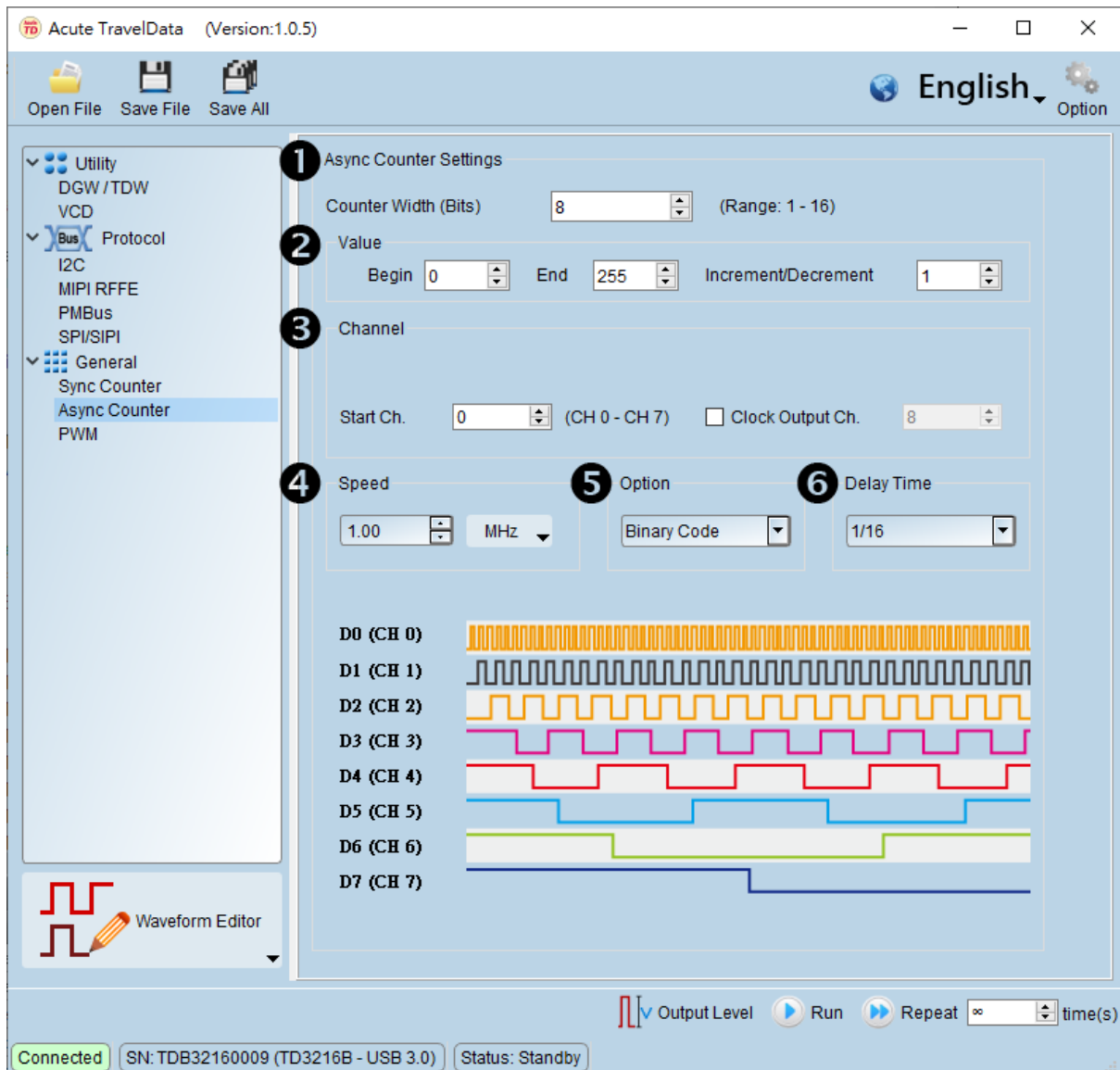
## General

### Sync Counter



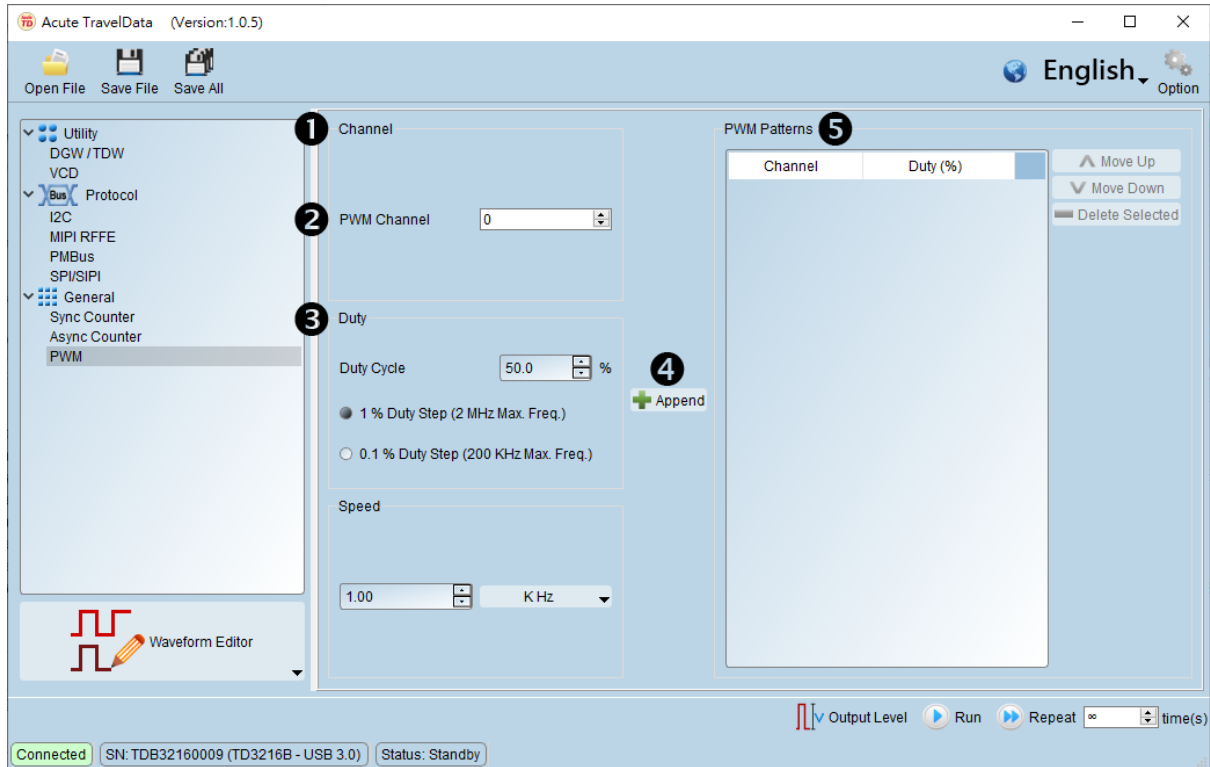
- ❶ Counter Width (Bits): set the counter width.
- ❷ Counter Begin /End /Increment/Decrement: set the begin/end/increment.
- ❸ Counter Channel: set the start channel/clock output channel.
- ❹ Counter Speed: set the speed.
- ❺ Counter Option: set the Binary/Gray/BCD Code.

## Async Counter



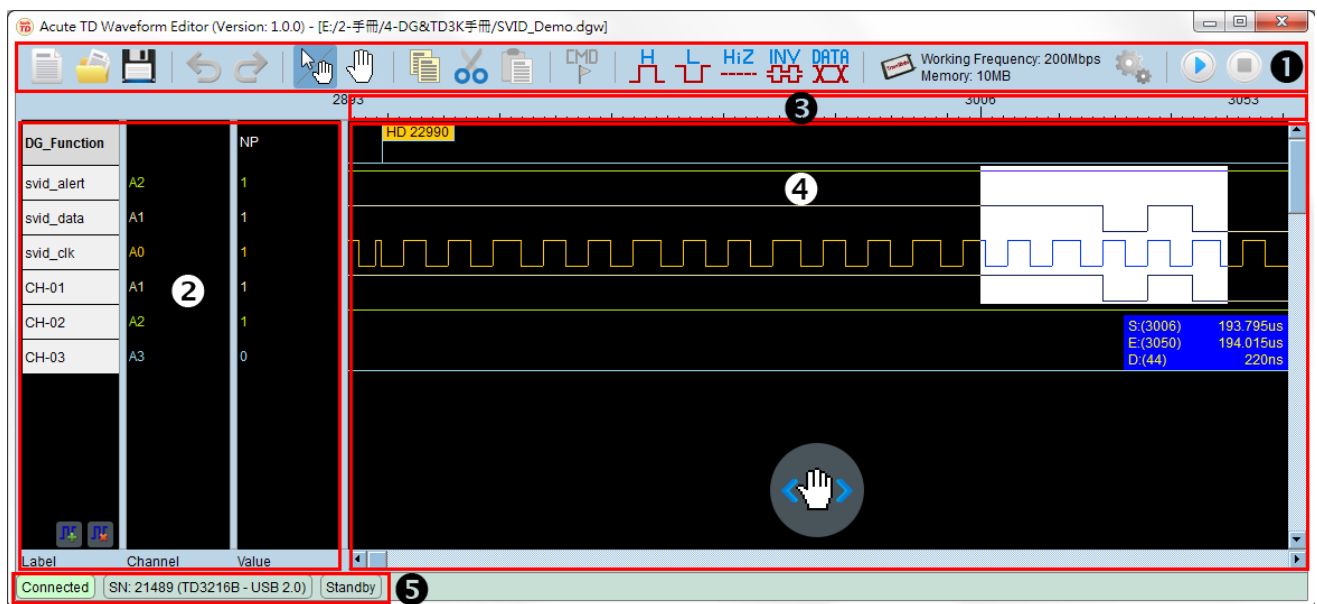
- ❶ Counter Width (Bits): set the counter width.
- ❷ Counter Begin /End /Increment/Decrement: set the begin/end/increment.
- ❸ Counter Channel: set the start channel/clock output channel.
- ❹ Counter Speed: set the speed.
- ❺ Counter Option: set the Binary/Gray/BCD Code.
- ❻ Counter Delay Time: set the delay time.

## PWM



- ❶ PWM Channel: set the PWM channel.
- ❷ Duty Cycle: set the PWM Duty Cycle °
- ❸ Speed: set the PWM speed, Range: 100 Hz ~ 2 MHz.
- ❹ Append: append the settings in the PWM pattern list.
- ❺ Move up/ Move Down/ Delete Selected: Move up/move down/delete the selection.

## Waveform Editor



### 1 Tool Bar



New Page : Empty the waveform.



Open File : Open the \*.dgw/\*.dgv/\*.tdw file.



Save File : Save the settings and waveform as a \*.dgw/\*.dgv file.



Undo



Redo



Drag Waveform : Switch the mouse operation to the drag mode.



Auto : Switch the mouse operation to the auto mode.



Copy : Copy the selected waveform to the clipboard.



Cut : Cut the selected waveform to the clipboard.



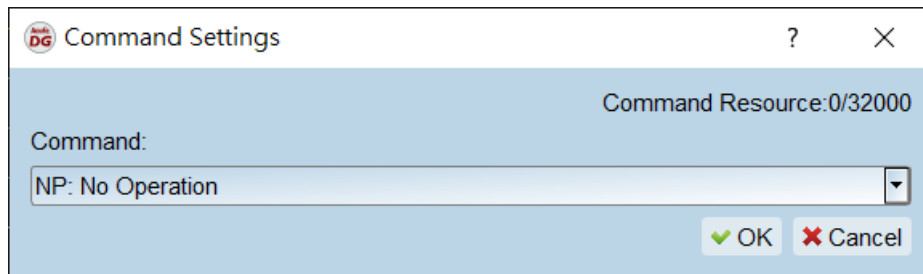
Paste : Paste the waveform from the clipboard to the selected area.



Edit Command : Insert a command to the selected position.



Delete Command : Delete the selected commands.

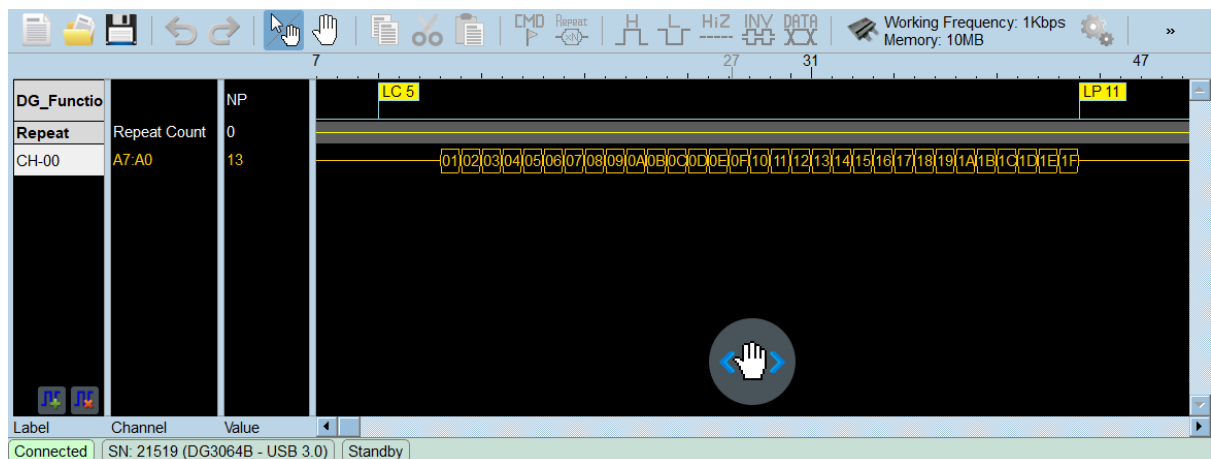


No Operation (NP): No commands (default).

Loop Count (LC): Set the loop count, its range is 1~ 8,388,607.

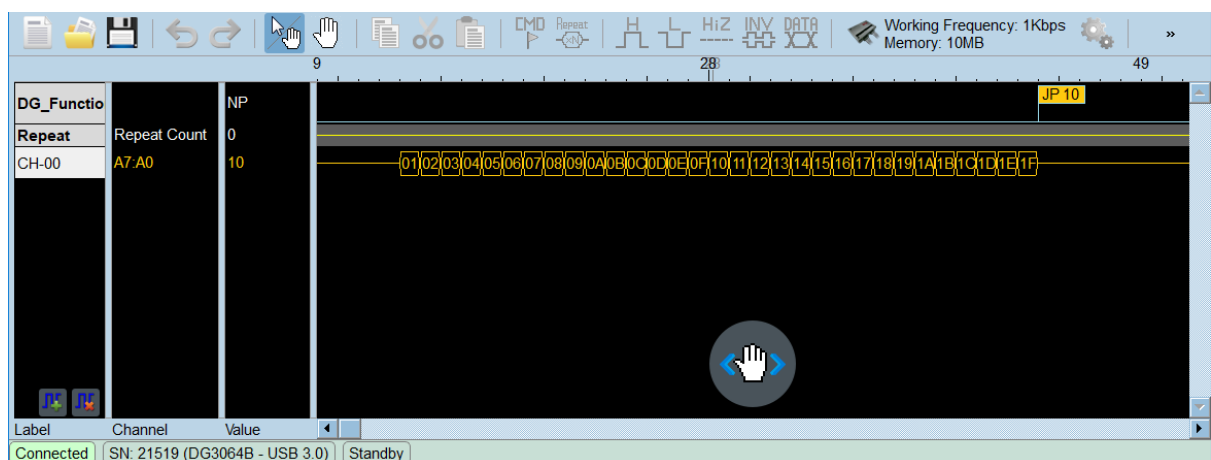
Loop to New Address (LP) : Set a limited count to output the waveform with LC.

Output the waveform 5 times:



Jump to New Address (JP) : Jump to a new address to output the waveform repeatedly.

Output the waveform repeatedly until press the Stop button.



Wait Event (WE): Set an event command, support the Event 0~2 / Keyboard Event / Event Invert.

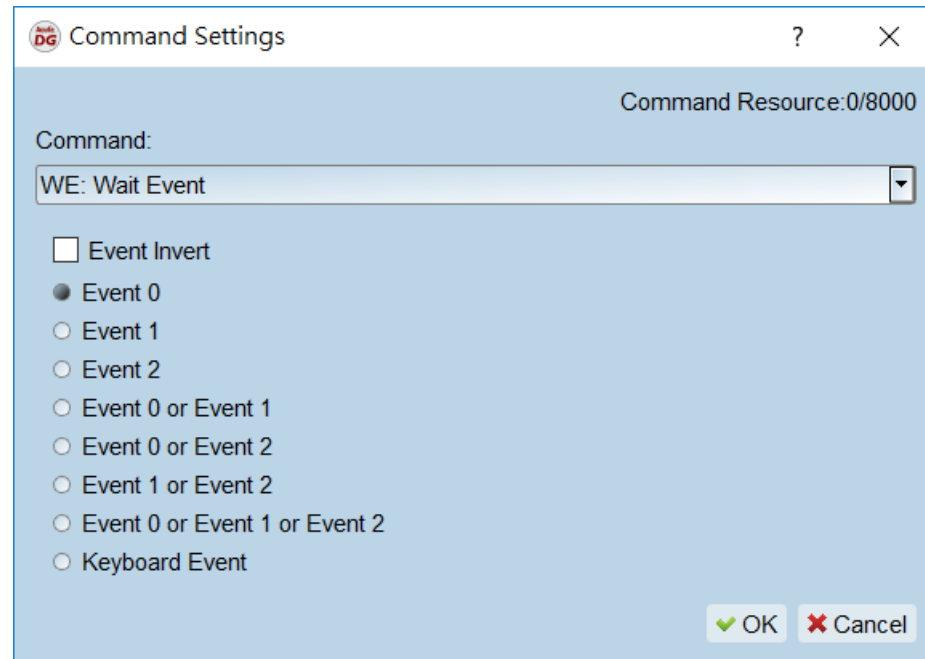
Event 0~2 means that Event-tip (DG3000) channel 0~2 or Ev0~2 (TD3000) channel.

The event occurred when these channels received a pulse.

Keyboard Event means the Space (default) or Enter key from the computer keyboard.

The event occurred when the Space or Enter key was pressed.

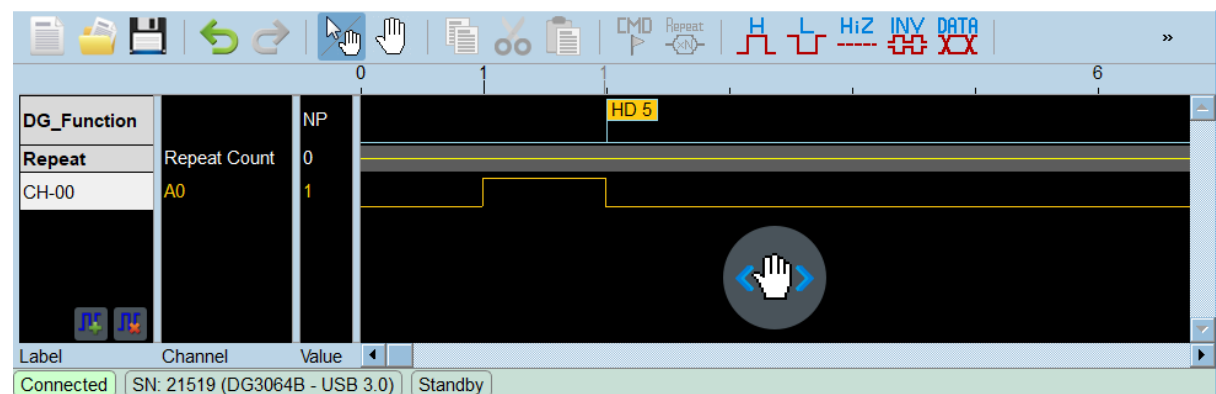
Event Invert means that invert the event waveform.



Hold Count (HD): Set the count of the waveform, its range is 1~ 8,388,607.

This command is only provided for by DG3000 series.

The width of the pulse is 5 ns, it will become 25 ns when insert a HD 5 command.



**These 2 functions are only provided for by DG3000 series:**

Repeat



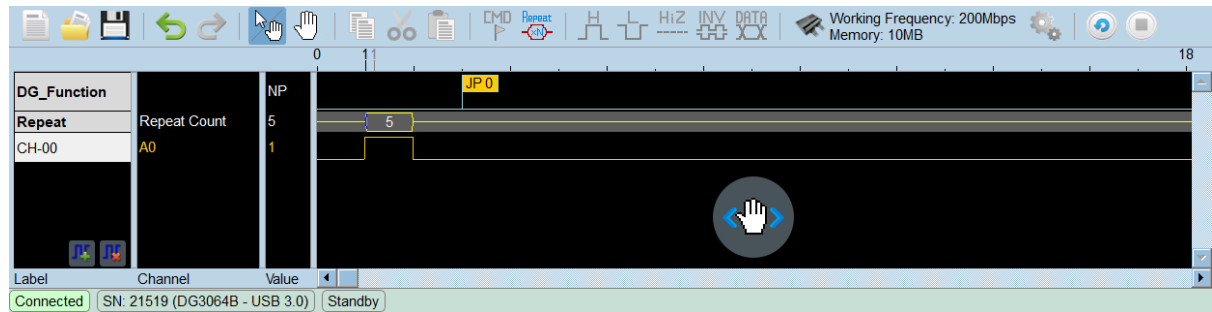
Edit Repeat Count : Insert a Repeat Count command.

Repeat



Delete Repeat Count : Delete the Repeat Count command.

The width of the pulse is 5 ns, it will become 25 ns when insert a Repeat Count = 5.



High — Draw high (1) waveform.



Low — Draw low (0) waveform.

HiZ



High Impedance — Draw the high impedance waveform.

It is 16 channels for a group when use the DG-tip to set the high impedance, e.g. set channel 0 as high impedance and channel 1 ~ 15 will be at high impedance, too.

Channels of OE-tip or TD3000 series can be set the high impedance each by each.



Inverse : Invert the waveform.



Edit Data : Generate the patterns that value/step counter/clock or bit/ baud rate data.



Hardware Settings : Set the working frequency, device memory and output level/threshold.



Environment settings : Set the path of working directory and hot key about the event.



Run : Output the waveform.



Run again : Output the waveform again.



Stop: Stop the waveform output.

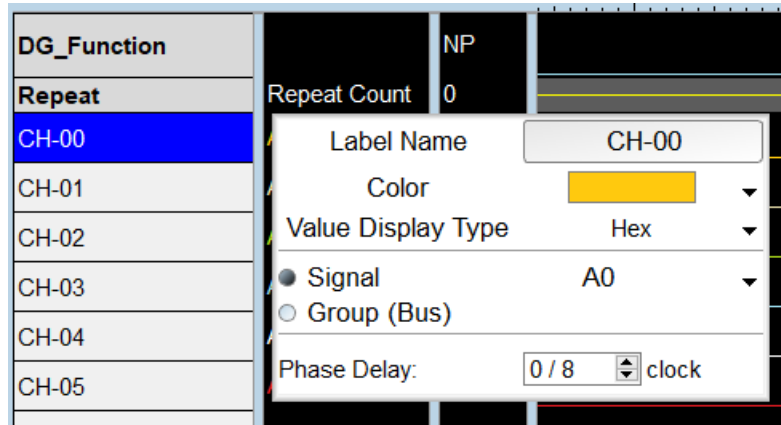
## ② Channel

Label : Show the channels.

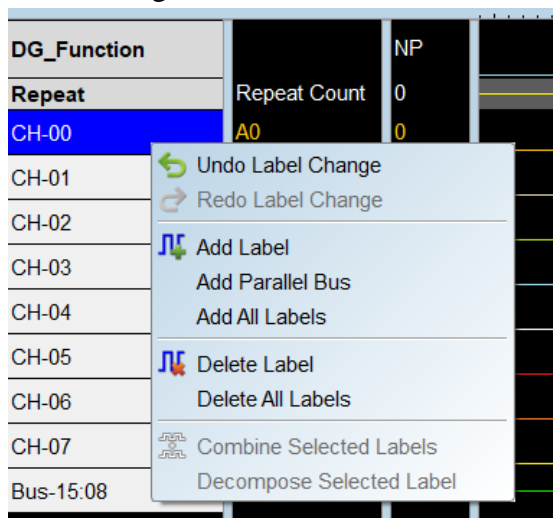
() add new channel label, () delete the selected channels label.

Selected the label and click the left button of mouse.

Phase Delay only works at DG3000 series and the data rate must be set less than or equal to 300Mbps.



Click the right button of mouse.



Channel : Show the channel number.

Value : Show the channel value at the position of the cursor.

## ③ Waveform Scale Area

Black color value of the left side : Show the start address of the selected range.

Black color value of the right side: Show the end address of the selected range.

Black color value in the range of waveform area: Show the address at the position cursor clicked.

Gray color value in the range of waveform area: Show the address at the position cursor standed.

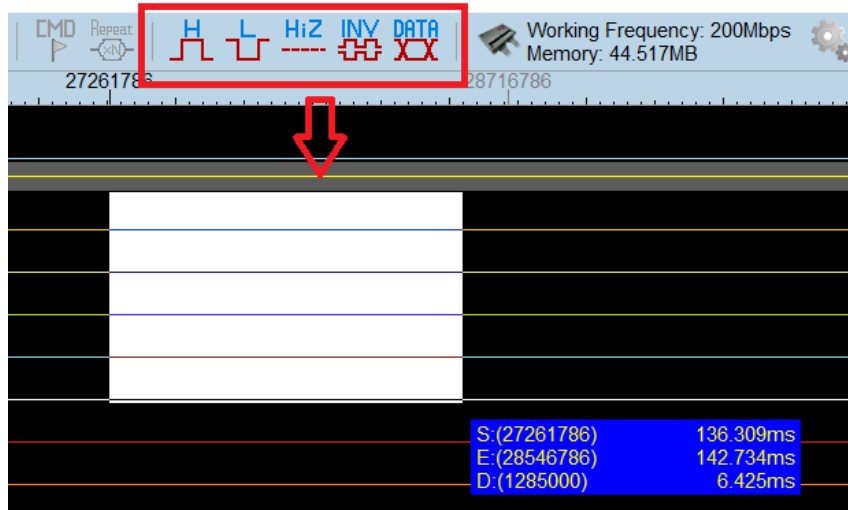
#### ④ Waveform Area

Zoom in/out the waveform by scrolling the mouse wheel to make the waveform.

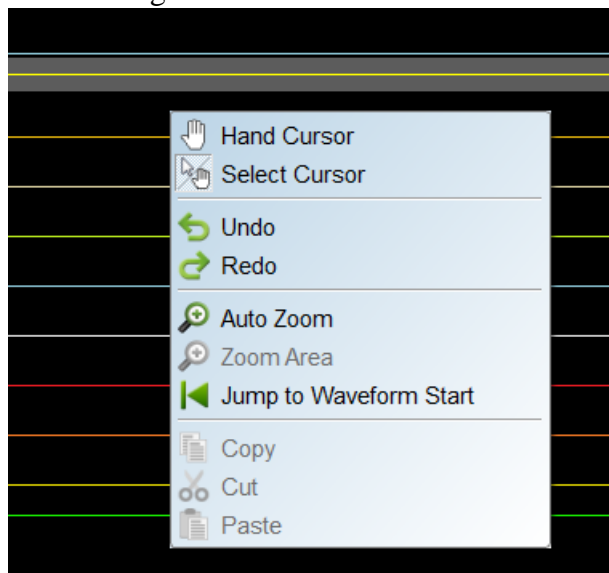
Drag the waveform by press the button of the following:



Select an area to edit the waveform:



Press the right click in the waveform area.



#### ⑤ Device Status

Show the device connection status/serial number/interface.

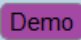
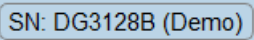
## Chapter 3      Technical support

### Contact information

Acute website : <http://www.acute.com.tw>

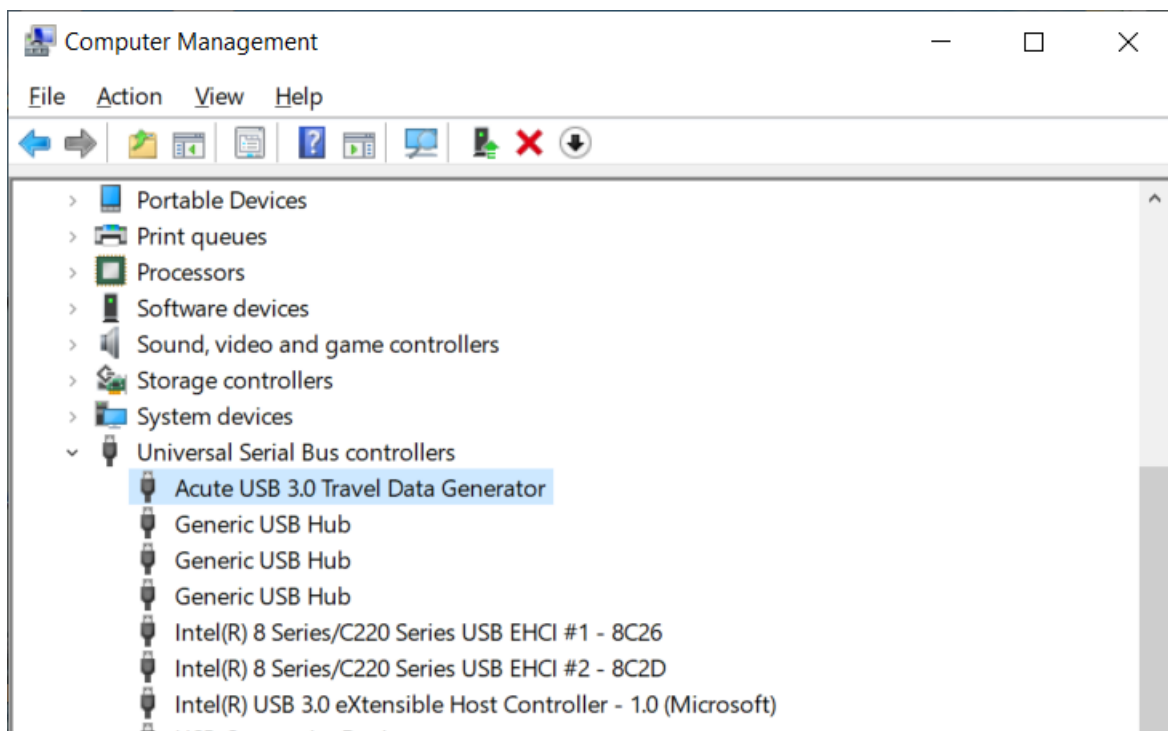
E-Mail : [service@acute.com.tw](mailto:service@acute.com.tw)

Tel: +886-2-29993275    Fax: +886-2-29993276

If   shows up in the Demo mode during the execution of software, please try the following steps to solve the issue:

- (1) Install the latest version of the software, please go to the official website of Acute Technology Inc. - Download - Software, and then select the Data Generator to download and install.
- (2) Please use the original USB3.0 Cable in the kit.
- (3) Go to the device manager and check the driver status.

Please connect the device USB cable to the computer and then go to the system device manager to check whether the Acute USB 3.0 (Travel) Data Generator shows up. Please go to the Acute Website - Download - Software, download the USB3.0 driver and follow the troubleshoot manual in the package to reinstall the driver.



- (4) Remove all probes and re-plug the USB3.0 Cable or restart the computer to check

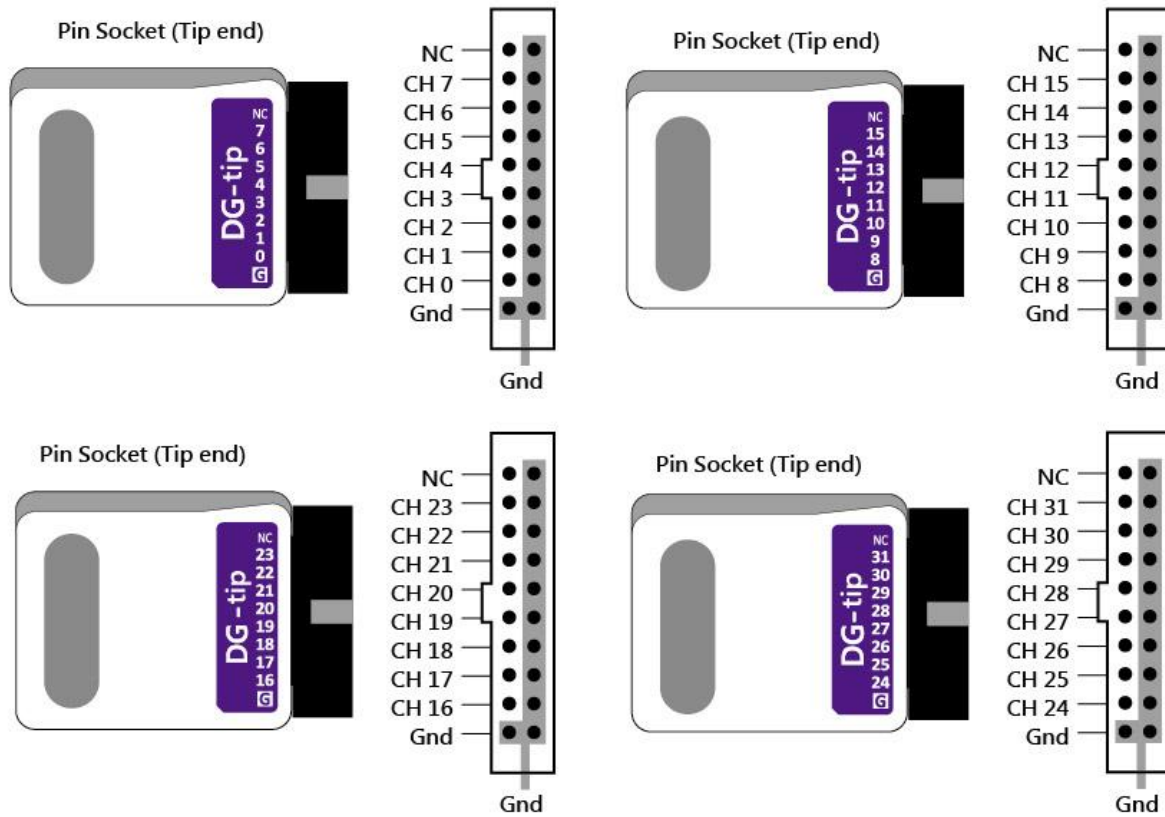
whether the driver appears.

(5) After the above steps are taken but the problem is still there, please contact us.

## Appendix 1 Probe pin defined & Dimension

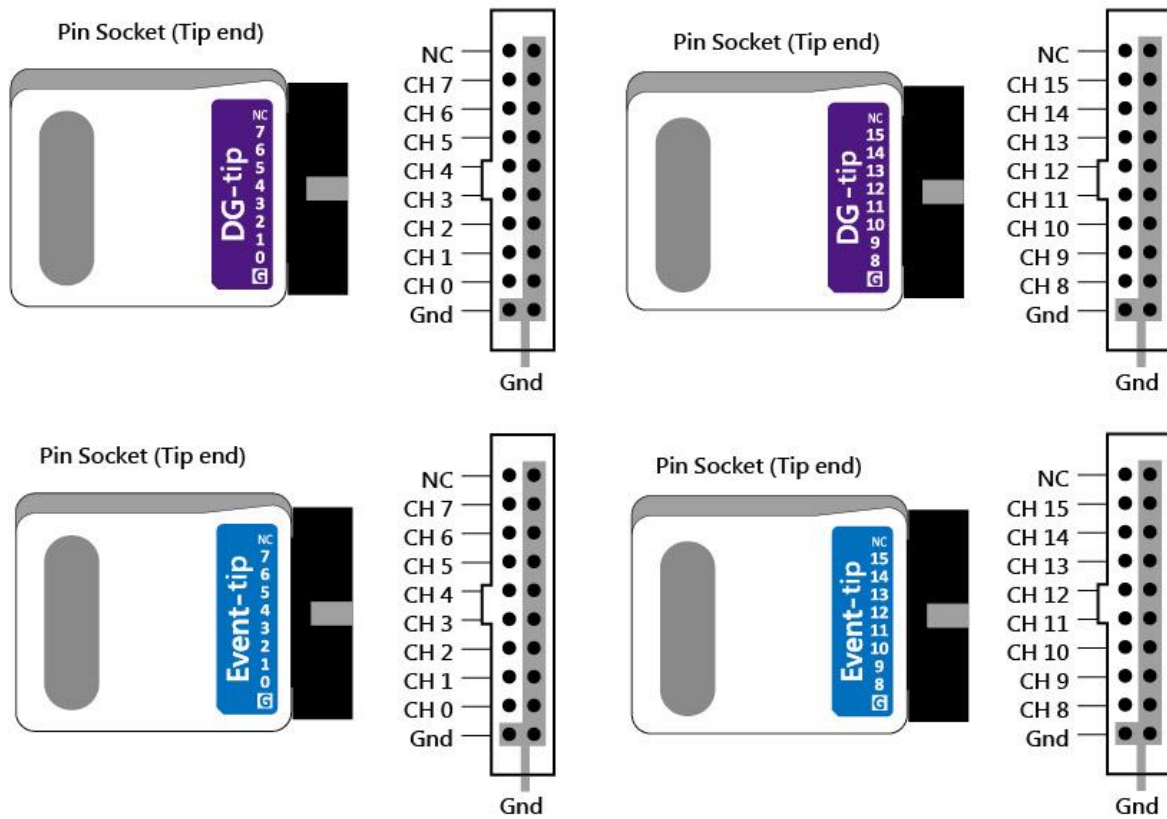
### DG Probe

#### DG probe pin defined



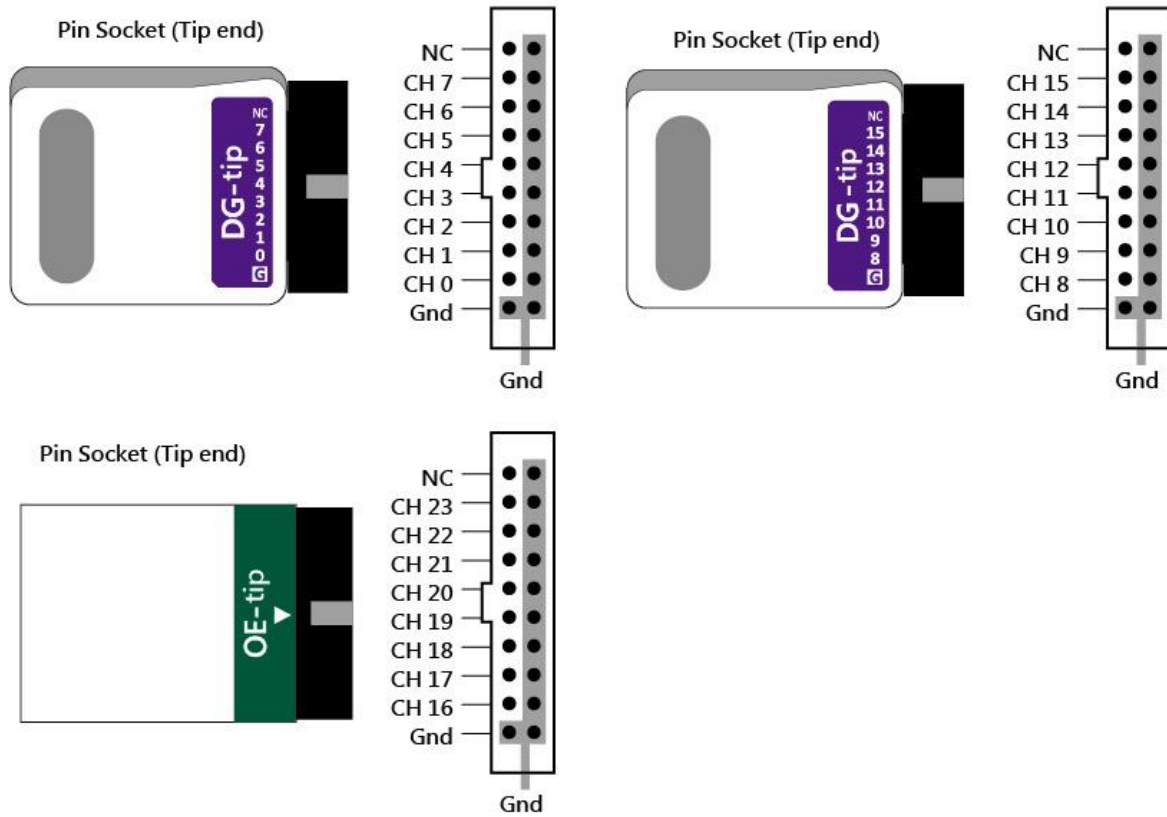
## Event Probe

### Event-tip pin defined



## OE Probe

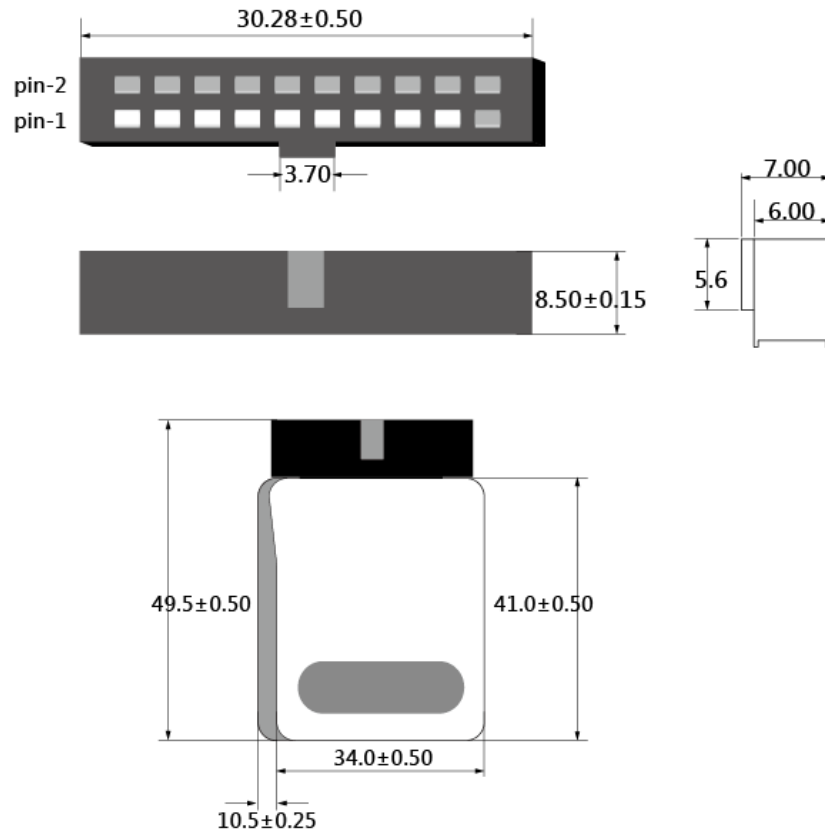
### OE-tip pin defined



## Tip Dimension

Mates with: 2.54mm box header or pin header

20-pin Data Generator: Probe tip = Pin Socket , Pitch=2.54 , Unit : mm.



## Appendix 2 Use text editor tool to edit vector file(dgv)

### File Content

```

INPUTS
DG_CMD:-2,
DG_PARA:-1,
Clk:0,
Reset:1,
Write:2,
Check:3,
DataA[7..0]:15..8,
DataB[7..0]:23..16,
DG_OE0:120,
INTERVAL 125ns;
//FREQUENCY 8MHz;
VOLTAGE
2.5,3.3,3.3,3.3,3.3,3.3,3.3,1.6;
//DG_CMD, DG_PARA, Clk, Reset, Write, DataA, DataB, DG_OE0
PATTERN
:Start
    NP      0      0      0      0      1      00h      00h      0
    NP      0      1      0      0      0      00h      00h      0
    LC      5      0      0      0      0      00h      00h      0      //LC 5
    NP      0      1      0      0      0      00h      00h      0
:A0
    NP      0      0      0      1      0      55h      00h      0
    NP      0      1      0      0      0      55h      00h      0
    LC      3      0      0      0      0      55h      00h      0      //LC 3
    NP      0      1      0      0      0      55h      00h      0
    NP      0      0      0      0      0      55h      00h      0
    NP      0      1      0      0      0      55h      00h      0
    NP      0      0      0      0      0      55h      00h      0
:A1
    NP      0      1      1      0      0      00h      FFh      0
    NP      0      0      0      0      0      01h      FEh      0
    NP      0      1      0      0      0      02h      FDh      0
    NP      0      0      0      0      0      03h      FCh      0
    NP      0      1      0      0      0      04h      FBh      0
    NP      0      0      0      0      0      05h      FAh      0
    NP      0      1      0      0      0      06h      F9h      0
    NP      0      0      0      0      0      07h      F8h      0
    NP      0      1      0      0      0      08h      F7h      0
    NP      0      0      0      0      0      09h      F6h      0
    NP      0      1      0      0      0      0Ah      F5h      0
    NP      0      0      0      0      0      0Bh      F4h      0
    NP      0      1      0      0      0      0Ch      F3h      0
    NP      0      0      0      0      0      0Dh      F2h      0
    NP      0      1      0      0      0      0Eh      F1h      0
    LP      A1      0      0      0      0      0Fh      F0h      0      //Loop to A1
    NP      0      1      0      0      0      00h      00h      0
    NP      0      0      0      0      0      00h      00h      0
    NP      0      1      0      0      0      00h      00h      0
    LP      A0      1      0      0      0      00h      00h      0      //Loop to A0
    NP      0      0      1      0      0      00h      00h      0
    NP      0      1      1      0      0      00h      00h      0
    NP      0      0      1      0      0      00h      00h      0
    NP      0      1      1      0      0      00h      00h      0
    NP      0      0      1      0      0      00h      00h      0
    JP      Start      1      1      0      0      00h      00h      0      //Jump to Start
;

```

There are 4 parts to form a DGV file contents, they are **INPUTS**, **INTERVAL** or **FREQUENCY**, **CLOCK\_MODE**, **VOLTAGE**, **PATTERN**.

**INPUTS:** a key word to input the signals.

DG\_CMD:-2,

DG\_PARA:-1,

These 2 items must be reserved and the channel number is fixed, -2 and -1.

They are data generator instructions and parameters, the DG instructions are shown as following:

**NP(No Operation)**

**LC(Set Loop Count)** :parameter:  $1 \sim 2^{23} - 1$ (count).

**LP(Loop) / JP(Jump)** :the parameter of JP & LP is a label or address.

**WE(WaitEvent)** :parameter 0: Keyboard Event, 1: EV0, 2:EV1, 3:EV2, 4:EV0 or EV1, 5: EV0 or EV2, 6: EV1 or EV2, 7: EV0 or EV1 or EV2, 8 = reverse the result of parameter = 0, 9 = reverse the result of parameter 1....

**RP(Repeat)** :parameter  $1 \sim 2^{23} - 1$ (count).

Each signal is separated by “,” and signal name and channel number is separated by “:”.

Clk:0 : set the label name “Clk” and channel number is channel 0.

DataA[7..0]:15..8 : set the label name “DataA[7..0]” and channel number is channel 8~15, it’s a data bus, 8..15, from LSB to MSB.

Set delay  $x/8$  clock when type “#x”,  $x = 0 \sim 7$ , assuming that the working frequency = 125 MHz, it means that a clock cycle is 8 ns,  $x = 5$ , it will delay 5 ns.

DG\_OE0:120, DG\_OE1:121, ... ,DG\_OE6:126 :

it also a reserved signal to set output enable or disable, 120 ~ 126 for DG 3000 series; 16 ~31 for TD 3000 series.

DG\_OEx = 0, Ouput Enable ; DG\_OEx = 1, Output Disable.

DG\_OE0 include CH0~CH15 (DG 3000); CH0 (TD 3000),

DG\_OE1 include CH16~CH31 (DG 3000); CH1 (TD 3000)

DG\_OE2 .....

---

## **INTERVAL**

**FREQUENCY**: only select INTERVAL or FREQUENCY mode, the range of frequency is  
100Hz~400MHz (DG 3000), 100Hz~200MHz(TD3116B/3216B),  
100Hz~100MHz(TD3008E).

**CLOCK\_MODE**: select internal clock or external clock to output the waveform.

Internal Clock → **CLOCK\_MODE** Internal;

External Clock → **CLOCK\_MODE** Clk-In or CKI;

**VOLTAGE**: there are 8 voltage values, each for the output voltage of 8 or 16 channels, 1<sup>st</sup>  
voltage value is for CH0~CH7 /CH0~CH15 (TD 3000/DG 3000), 2<sup>nd</sup> voltage value for  
CH8~CH15/ CH16~CH31/ (TD 3000/DG 3000)...

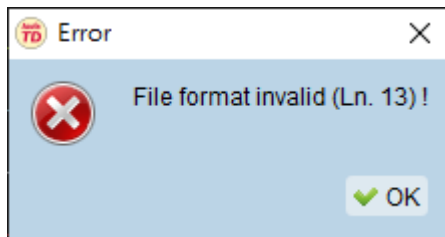
3<sup>rd</sup> / 8<sup>th</sup> voltage value is the threshold of Event Pod (TD 3000/DG 3000).

The range of voltage value is 0.8 ~ 5.0 (DG 3000 series); 0.8 ~ 4.5 (TD 3000 series).

The range of threshold value is -1.0 ~ 8.0 (DG 3000 series); -5.0 ~ 5.0 (TD 3000 series).

**PATTERN**: it's a waveform area; a row is a clock sample. ":Start" or ":A0" means a label,  
they are jump(JP) points.

Note: The software provides a text vector file format check function. If the text vector file format is incorrect, then the software will display an error message and tell which line is incorrect.



```

INPUTS
DG_CMD:-2,
DG_PARA:-1,
SPICS:0,
SPICLK:1,
MOSI:2,
MISO:3,
TESTM:4,
TRIGGER:5,
CH-06:6,
CH-07:7;
FREQUENCY 10000000Hz;
CLOCK MOD Internal; // Invalid keyword
VOLTAGE
3.3,3.3,1.6,3.3,3.3,3.3,3.3,3.3;
PATTERN
NP      0      1      0      1      0      0      0      1      1
NP      0      1      0      1      0      0      0      1      1
NP      0      1      0      1      0      0      0      1      1
NP      0      0      0      1      0      0      0      1      1
NP      0      0      0      1      0      0      0      1      1
NP      0      0      1      0      0      0      0      1      1
NP      0      0      0      0      0      0      0      1      1

```